

07483 415 753
events@weareunitx.com



THE STABLES
40 EARLHAM STREET, WC2 9LH

3 HANOVER SQUARE
HANOVER ST, MAYFAIR, W1S 1HD

A person stands in the center of a dark, industrial-style room. The room is filled with blue and red light. Several vertical light tubes are positioned around the room, casting a glow. The floor is dark and reflective, showing the lights. The ceiling is dark with some equipment visible. The overall atmosphere is mysterious and futuristic.

We are Unit X.
We create experiences.

YOUR VISION. OUR REALITY

UNIT X IS AN AWARD-WINNING COMPANY, HOSTING AND PRODUCING IMMERSIVE, CUTTING EDGE EXPERIENCES FOR THE WORLD'S MOST INNOVATIVE ORGANISATIONS. FOUNDED ON THE VALUES OF UNIT LONDON, UNIT X UTILISES AN ARTISTIC FRAMEWORK TO PROVIDE INCLUSIVE, ACCESSIBLE AND TRULY UNIQUE EXPERIENCES, TAILORED SPECIFICALLY FOR U.





Explore our venues
Originality is everything.

The image shows the interior of a converted stable building. The walls are made of dark, textured brick. The ceiling features a series of parallel metal beams with circular perforations. In the center, there is a large, arched glass door with a black frame. To the left and right of this central door are two tall, narrow glass panels, also with black frames. The floor is a smooth, dark grey. The overall atmosphere is modern and industrial.

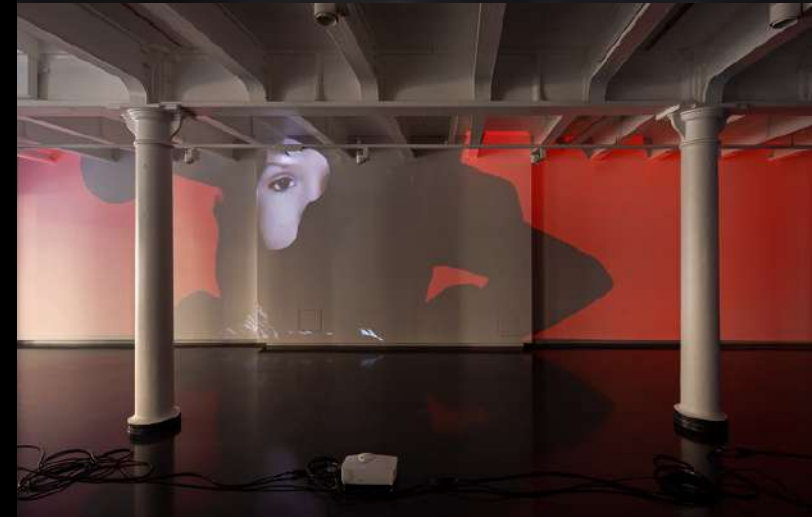
The Stables, Covent Garden

Custom-built gallery and event space

THE STABLES OUR CONCEPT

- VERSATILE CONCEPT SPACE
- WONDERFUL CENTRAL LONDON LOCATION
- DOUBLE FRONTAGE
- STREET LEVEL ACCESS
- 4500 SQ FT OF PREMIUM SPACE
- BRILLIANT STREET VISIBILITY
- CUSTOMISABLE AV OPTIONS
- BRANDING OPPORTUNITIES
- PRIVATE COURTYARD
- ACCESS TO ARTISTS & CREATIVES
- CREATIVE FREEDOM TO TRANSFORM THE VENUE
- PART OF SEVEN DIALS ESTATE WHICH ATTRACTS OVER 30 MILLION VISITORS A YEAR

3 minutes away from the street with the highest footfall in Western Europe...



LOCATED OFF SEVEN DIALS ROUNDABOUT IN THE BUSTLING HEART OF COVENT GARDEN IS OUR CUSTOM-BUILT CONCEPT VENUE THE STABLES.

DESIGNED TO ACCOMMODATE A HUGE RANGE OF EXPERIENCES THE SITE BOASTS 4500 SQ FT OF PREMIUM SPACE SPLIT OVER TWO SEPARATE FLOORS AND A PRIVATE COURTYARD.

WITH TWO ENTRANCES ON DIFFERENT STREETS AS WELL AS DOUBLE FRONTAGES AND LARGE GLASS WINDOWS, THE STABLES PROVIDES BRILLIANT STREET VISIBILITY AS WELL AS A WEALTH OF ON-SITE BENEFITS, FEATURES AND FACILITIES.

THE VENUE CAN BE COMPLETELY TRANSFORMED MAKING IT WORK PERFECTLY FOR EXPERIENTIAL EVENTS, BRAND ACTIVATIONS, PRESS DAYS, IMMERSIVE EXHIBITIONS AND SO MUCH MORE.

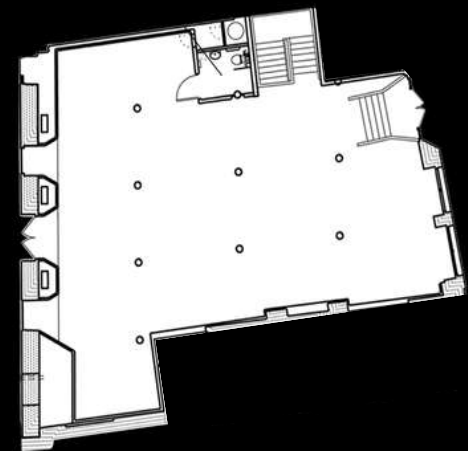


THE STABLES
GROUND FLOOR GALLERY



THE STABLES GROUND FLOOR GALLERY

- PREMIUM SPACE
- SHOWCASE LIGHTING
- THREE-PHASE POWER
- NATURAL DAYLIGHT
- DISABLED WC
- FLOATING WALLS
- STORAGE OPTIONS
- STREET LEVEL VISIBILITY
- BLANK CANVAS OPTIONS
- TWO ENTRANCES / DOUBLE FRONTAGE
- 5 LARGE GLASS VIEWING WINDOWS
- MULTIPLE RIGGING POINTS
- TEMPERATURE CONTROLLED HVAC
- ACCESS TO COURTYARD AND LOWER GALLERY



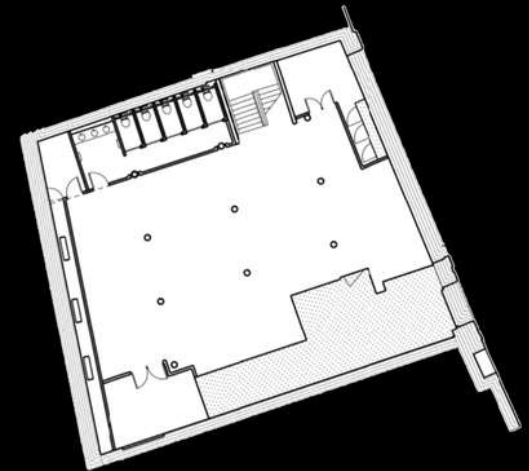
175 STANDING • 55 DINNER • 100 THEATRE

THE STABLES
LOWER GROUND FLOOR GALLERY



THE STABLES LOWER GALLERY

- VAULTED BARREL CEILINGS
- RECLAIMED PARQUET FLOORING
- CLOAKROOM / STORAGE
- PREP / CATERING AREA
- MULTIPLE RIGGING POINTS
- SHOWCASE LIGHTING
- 5 X UNISEX TOILETS
- NATURAL LIGHT FROM STREET LEVEL
- AV OPTIONS
- COMMS ROOM
- TEMPERATURE CONTROLLED HVAC
- ACCESS TO GROUND FLOOR GALLERY
- VIEW TO SHELTON STREET



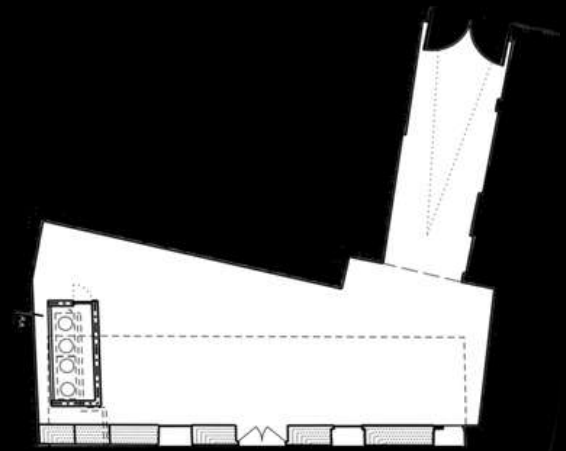
85 STANDING • 35 DINNER • 60 THEATRE

THE STABLES
THE COURTYARD



THE STABLES THE COURTYARD

- OUTSIDE SPACE
- PRIVATE VAULTED ENTRANCE
- EXPOSED BRICKWORK
- GLASS AWNING
- BRANDING OPPORTUNITIES
- ENTRANCE LED UPLIGHTING
- STREET-LEVEL ACCESS TO EARLHAM ST
- POWER, LX & RIGGING OPTIONS
- VEHICLE ACCESS
- DIRECT LOADING OPTIONS
- LARGE DISPLAY / VIEWING WINDOWS



80 STANDING • 30 DINNER • 40 THEATRE



3 Hanover Square, Mayfair

Premium gallery space in the prestigious area of Mayfair, London

3 HANOVER SQUARE OUR CONCEPT

- CUSTOM-BUILT PREMIUM EXHIBITION SPACE
- SITUATED ON THE IDYLIC HANOVER SQUARE, MAYFAIR
- 3 MINUTES FROM OXFORD CIRCUS STATION
- IMMERSIVE DINING EXPERIENCES
- A WEALTH OF ON-SITE INFRASTRUCTURE
- 30 SPEAKERS 16KW SOUND SYSTEM
- EVER-CHANGING BACKDROP OF CONTEMPORARY ARTWORK
- ACCESS TO ESTABLISHED AND EMERGING ARTISTS
- INDUSTRIAL AND MODERN ARCHITECTURAL FEATURES
- FREEDOM TO ORGANISE EVENTS AROUND UNIT LONDON'S EXHIBITION PROGRAMME



LOCATED IN HANOVER SQUARE, JUST A 3 MINUTE WALK FROM OXFORD CIRCUS STATION, THIS DYNAMIC VENUE CAN HOST UP TO 400 GUESTS IN A UNIQUE 6500 SQFT SPACE.

WITH STATE-OF-THE-ART LIGHTING, SOUND & VIDEO FACILITIES AS WELL AS A WEALTH OF ON-SITE FEATURES, 3 HANOVER SQUARE IS A MODERN VENUE FULLY EQUIPPED FOR A WIDE RANGE OF EXPERIENCES.

PERFECT FOR EVENING RECEPTIONS, PRIVATE DINING, PRESS DAYS AND SO MUCH MORE, 3 HANOVER SQUARE COVERS ALL BASES.

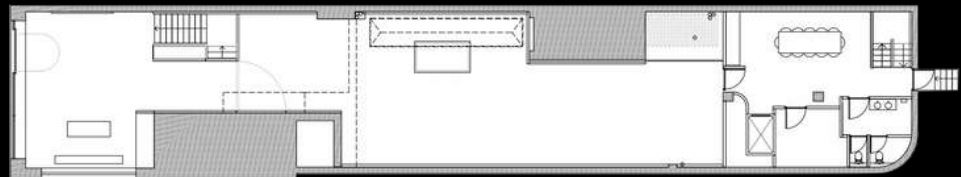


3 HANOVER SQUARE
GROUND FLOOR GALLERY



3 HANOVER SQUARE GROUND FLOOR GALLERY

- FULL-LENGTH GLASS FRONTAGE
- 3 X 2M CUSTOMISABLE LED SCREEN
- FRONT AND REAR LOADING ACCESS
- AIR CONDITIONING / HEATING
- PREMIUM SHOWCASE LIGHTING
- VAULTED CEILINGS
- VIEWING PLATFORM
- CATERING AREA
- FLOATING WALLS
- NATURAL DAYLIGHT
- RIGGING POINTS
- 26 X SPEAKERS, 7 X SUBS
- 2 X UNISEX TOILETS
- GLASS TASTING ROOM



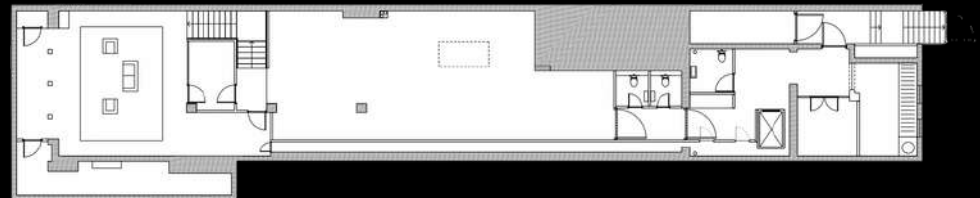
300 STANDING • 110 DINNER • 140 THEATRE

3 HANOVER SQUARE
LOWER GROUND FLOOR GALLERY



3 HANOVER SQUARE LOWER GROUND FLOOR GALLERY

- RECLAIMED PARQUET FLOORING
- VIEWING PLATFORM
- FULLY FITTED CATERING KITCHEN
- STORAGE OPTIONS
- BACK OF HOUSE AREAS
- PREMIUM SHOWCASE LIGHTING
- BLANK CANVAS OPTIONS
- ACCESS TO GROUND FLOOR GALLERY
- NATURAL DAYLIGHT
- AV OPTIONS
- 6 X SPEAKERS AND 5 X SUBS
- RIGGING OPTIONS
- 2 X UNISEX TOILETS
- DISABLED TOILET & LIFT ACCESS



100 STANDING • 50 DINNER • 70 THEATRE

Clients



Portrait 2, 2015





JOHN
LEWIS



Google Cloud



GUERLAIN

LIBERTY.



RANGE
ROVER



SAMSUNG

BELMOND

MAYBELLINE
NEW YORK



GYMSHARK

M&S



TEQUILA
PATRÓN

LOUIS ROEDERER
CHAMPAGNE

Condé Nast
Traveler

BREMONT

DONMAR

DR. BARBARA
STURM



VISTA JET

AMERICAN
EXPRESS

BOSS
HUGO BOSS

savills

CHAMPAGNE
POL ROGER



PRIVATE DINING & SPECIAL EVENTS

WITH TWO STUNNING VENUES IN CENTRAL LONDON LOCATIONS, UNIT X SPACES PROVIDE THE PERFECT SETTING FOR PRIVATE DINING, INTIMATE PARTIES OR SOMETHING COMPLETELY DIFFERENT.

HAVING ACCESS TO SOME OF THE WORLDS MOST EXCITING CONTEMPORARY ARTISTS, CREATIVES AND STATE OF THE ART TECHNOLOGY, WE OFFER A VERSATILE AND EVER-CHANGING BACKDROP TAILOR MADE AROUND YOUR REQUIREMENTS.

WHETHER IT BE AN EVENING RECEPTION, A PRIVATE PARTY OR A GRAND BAQUET, OUR SUPPLIERS PROVIDE A WORLD OF MOUTH-WATERING OPTIONS TO SUIT ANY OCCASSION.

LOOKING TO CREATE SOMETHING EXTRA SPECIAL? GET IN TOUCH TO FIND OUT MORE ABOUT OUR CULINARY EXPERIENCES AND HOW WE CAN HELP MAKE YOUR VISION A REALITY.







07483 415 753
events@weareunitx.com



THE STABLES
40 EARLHAM STREET, WC2 9LH

3 HANOVER SQUARE
HANOVER ST, MAYFAIR, W1S 1HD