

# HAUS DER WIRTSCHAFT

BASEL-LANDSCHAFT

## THE MOST IMPORTANT INFORMATION AT A GLANCE

### Contact

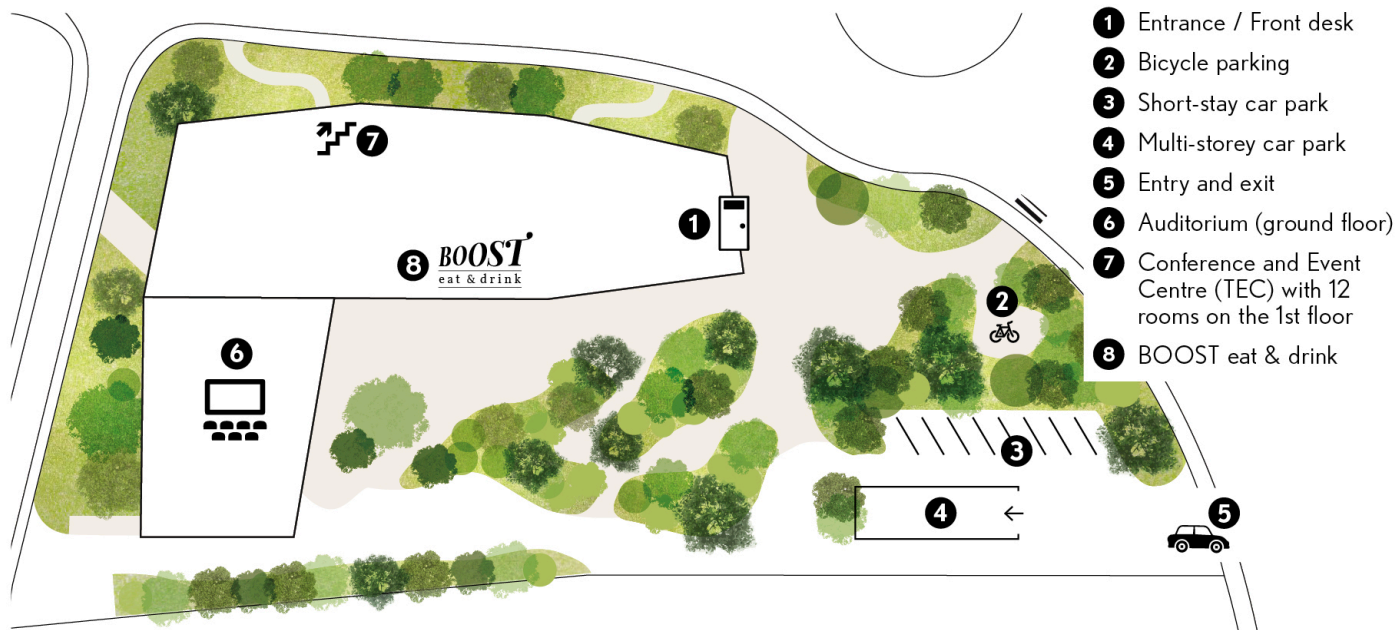
Front desk opening hours  
Haus der Wirtschaft (HDW)  
Mon-Fri, 7 a.m.-7 p.m. +41 (0)61 927 64 64.  
Email: [frontdesk@hdw.ch](mailto:frontdesk@hdw.ch)

### Food & Drink

There are several different options available:  
BOOST eat&drink, Catering,  
Off-the-record bar.

### Payment

Cash (CHF, EUR), EC-Direct,  
Postcard, Mastercard, Visa,  
Apple Pay, Twint



### Directions and parking

You can reach the Haus der Wirtschaft easily and quickly by public transport as well as by car, motorbike and bicycle. There are sufficient parking spaces available (multi-storey car park, short-stay car park).

### Public transport

The following stops are in the immediate vicinity of the HDW:

**S1 / S3 / 80 / 82 / 83** SBB train station, Pratteln (350 metres): five-minute walk.

**80 / 83** Pratteln Grüssen (300 metres): five-minute walk.

**14 / 82** Bahnhofstrasse (600 metres): ten-minute walk.

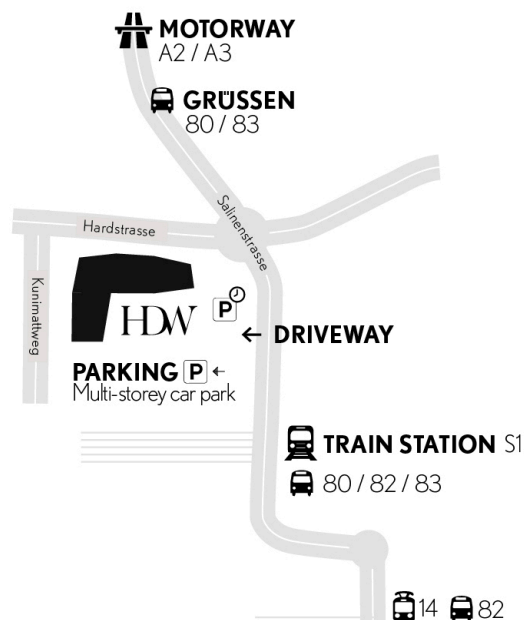
Plan your journey with [sbb.ch](https://www.sbb.ch)

### Car, motorbike

Please note when using a navigation device for directions: access to the HDW multi-storey car park is via Salinenstrasse (level with Salinenstrasse 45 C).

Access via Kunimattweg is exclusively for suppliers.

From the A2/A3 motorway: take the "Pratteln" exit. Drive straight ahead on Salinenstrasse towards Pratteln. The entrance to the Haus der Wirtschaft and the multi-storey car park is about 100 metres after the Kunimatt roundabout, on the right-hand side.



# HDW

SERVICES. BUSINESS. INNOVATION.

Hardstrasse 1, CH-4133 Pratteln | [hdw.ch](https://www.hdw.ch) | [facebook.com/hdwbl](https://facebook.com/hdwbl)



The conference and event centre (TEC) in the Haus der Wirtschaft in Pratteln sets new standards for your individual meeting requirements over 2,000 m<sup>2</sup>. 12 state-of-the-art event rooms and a unique auditorium are available just a few kilometres by train or motorway from the city of Basel. Impress your partners and customers with a meeting in the most attractive conference and event location in north-western Switzerland, immerse yourself in a fresh Baselbiet environment and conquer the business world from here. We look forward to welcoming you and creating the perfect day to suit your needs.

### Auditorium

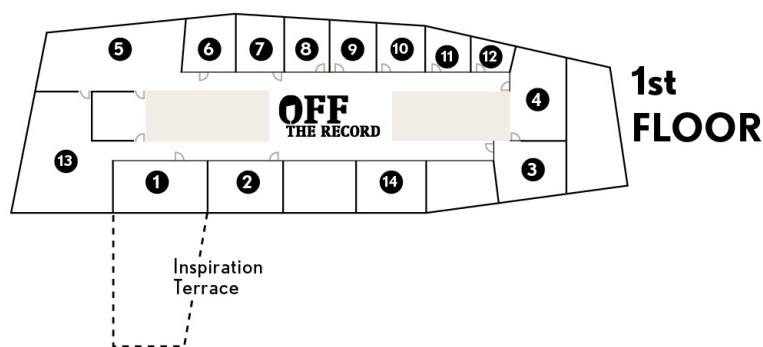
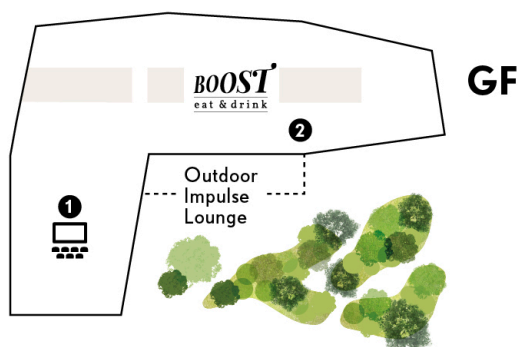
An auditorium for up to 300 people, a 11×3.5-metre wide LED wall, a control room with all the technical refinements in acoustics and lighting – the centrepiece in the House of Business is unparalleled in the northwestern Switzerland region. Here you can set the stage for really big events, whether they're customer events, conferences, meetings, but also cultural or private events. The possibilities are almost unlimited. We can offer you support in technology, communication and catering from one single source.

### Meetings & Rooms

12 different room options with daylight are available on the 1st floor in the Haus der Wirtschaft. In the "Small Conference" room you can stage conferences for 100 people, in the unique themed rooms "Panama", "Casablanca", "Amazonas", "Malawi", "Camargue", "Mumbai" and "Malibu" you can conquer the world with innovative ideas. Or how about the classic "Boardroom" for the board of directors or executive board meeting? In the "Baselland Business Factory" or in the two creative spaces, the attractive surroundings inspire unique plans. The Inspiration Terrace and Outdoor Impulse Lounge are ready and waiting outside. You have a wide choice – we will be happy to personally advise you.

### Food & Drink

BOOST eat & drink is the name of the restaurant in the HDW. It offers a wide range of menus, snacks and take-away options that meet the demands of healthy, fresh and regionally based cuisine. The setting on the open ground floor with its plants, furniture and look creates a unique ambience. The Off-the-record bar is available for events and meetings on the upper floor. The HDW catering offers attractive options.



### GF

Event platform	Living Room	Size m <sup>2</sup>	Theatre	Seminar/ Assembly	Banquet	U-shape	Cocktail
1 Auditorium	-	430	300	117	208	80	300
2 Foyer	-	490	-	-	96	-	300

### 1st FLOOR

Veranstaltungsraum	Living Room	Size m <sup>2</sup>	Theatre	Seminar/ Assembly	Banquet	U-shape	Block
1 Baselland Business Factory	10	49	-	-	-	16	20
2 Boardroom	-	48	-	-	-	-	16
3 Creative Room 1	16	49	41	15	-	16	18
4 Creative Room 2	21	62	50	17	-	20	22
5 Small Conference	-	112	100	31	50	32	32
6 Panama	8	35	-	9	16	10	12
7 Casablanca	8	34	-	9	16	10	12
8 Amazonas	8	30	-	7	16	-	12
9 Malawi	6	29	-	7	8	-	12
10 Camargue	6	28	-	7	8	-	12
11 Mumbai	6	22	-	6	8	-	6
12 Malibu	4	15	-	4	8	-	4

### Open Spaces

	Size m <sup>2</sup>
13 Open Space	127
14 Lounge	48

### Outdoor Spaces

	Size m <sup>2</sup>
Inspiration Terrace	120
Outdoor Impulse Lounge	161