

WHERE THE BEST MINDS MEET

For conferences, workshops, strategy meetings
The Gottlieb Duttweiler Institute: think tank and event location



OUR BUILDING

When Gottlieb Duttweiler founded the GDI over 50 years ago, he created a place for reflection and encounters. Today our institute is one of Switzerland's leading think tanks. Intellectual trailblazers come here from around the world to hone their ideas for the future. You too can benefit from this uniquely creative atmosphere.

The GDI is the ideal event location for your retreat, workshop or conference. From board meetings to professional development, strategy meetings and client events, the venue will ensure you work efficiently and a stroll through the surrounding parkland will help you relax.





OUR LOCATION

The GDI is close to Zurich, yet surrounded by nature. Our building is next to the historic Park im Grüene, a popular recreation area for people of all ages.

Situated high above Lake Zurich, you'll enjoy a fabulous panorama spanning the city, lake and distant snow-capped Alps.



OUR SPEAKERS

What does the future of your industry look like? Our trend researchers offer you and your company customised presentations and workshops. This way, you receive practical inspiration to boost your innovation directly from the GDI think tank.

Our location offers various bright, well-equipped rooms for three to 300 guests. We have the perfect space for every event – including a park terrace and the sprawling lawns of the Park im Grüene. All our facilities can be set up and combined according to your requirements.

OUR SPACES



OUR INFRASTRUCTURE

The event spaces at the GDI feature a comprehensive range of technical equipment: projectors, PA systems, interpreting booths (conference room 1), wireless/DSL internet and much more. Our experienced technicians offer you support before and during your event.









OUR CATERING

Our catering team will gladly provide your guests with plenty of food for thought. At the GDI we always serve healthy seasonal cuisine fresh from the market. We know that the only way to make great food is by using great ingredients. Whether you prefer a standing reception or a multi-course dinner, we guarantee it will be a culinary experience to remember.



ROOM OVERVIEW

Spaces							m ²	Length	Width	Height	Terrace
1st floor											
Conference rooms 1+2	–	–	230	310	–	–	301	21.5	14	5	–
Conference room 1	–	45	140	170	–	–	203	14.5	14	5	–
Conference room 2	–	30	48	90	–	–	98	14	7	5	–
Foyer A	–	–	–	–	–	–	160	–	–	–	–
Ground floor											
Restaurant	–	–	–	–	180	250	270	22.5	12	3	✓
Restaurant + Room 1	–	–	–	–	220	310	330	–	–	3	✓
Room 1	–	12	–	–	40	50	60	8	7.5	3	✓
Foyer B	–	–	–	–	–	–	170	–	–	–	–
Park terrace	–	–	–	–	–	150	160	–	–	–	✓
1st basement											
Room 2	14	16	18	40	–	–	49	7.5	6.5	2.9	–
Room 3	–	26	34	60	–	–	95	12.5	7.5	2.8	✓
Library	–	42	50	80	70	80	135	18	7.5	2.8	–
Multimedia room	Two Mac work stations										
Lake terrace	–	–	–	–	–	–	40	–	–	–	✓
Foyer C	–	–	–	–	–	–	70	–	–	–	–
2nd basement											
Room 4	10	–	–	–	–	–	25	5.6	4.5	2.5	✓
Room 5	12	–	–	–	–	–	37	7.5	4.9	2.6	✓
Room 6	8	–	–	–	–	–	17	4.4	3.7	2.6	–
Room 7	14	16	18	32	–	–	56	7.6	7.4	2.6	–
Room 8	14	16	18	32	–	–	56	7.6	7.4	2.6	–
Room 7 + 8	–	34	42	70	–	–	112	15.2	14.8	2.6	–

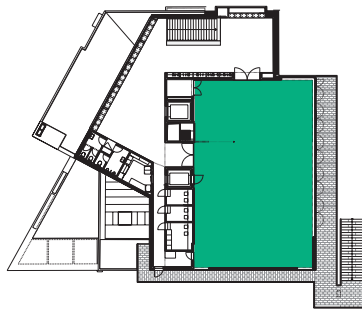
Widescreen

In conference room 1, you can take advantage of a high-tech widescreen, which is a production and presentation system for large screens with unprecedented image quality and resolution. Using widescreen technology, images, presentations, videos and camera signals can be freely positioned on the projection screen or superimposed and hence flexibly integrated into your event.

CONFERENCE ROOMS 1+2



1st floor



Capacity

 230 persons

 310 persons

Dimensions

Floor space: 301 m²

Length: 21.5 m

Width: 14 m

Height: 5 m

Equipment

Stage

Lectern

Projectors

PA system

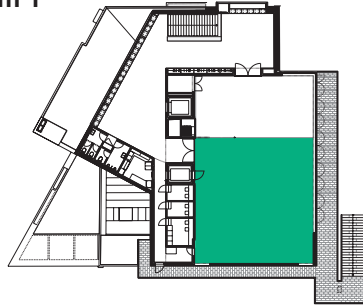
Interpretation booths

Pin board

Flip chart

Presentation materials

Wireless/DSL internet

Conference room 1**Capacity**

45 persons



140 persons



170 persons

DimensionsFloor space: 203 m²

Length: 14.5 m

Width: 14 m

Height: 5 m

Equipment

Stage

Lectern

Projectors

PA system

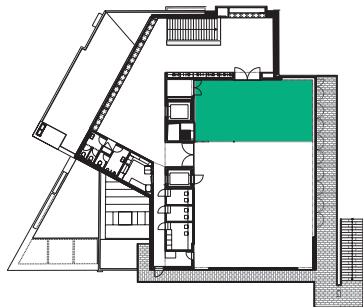
Interpretation booths

Pin board

Flip chart

Presentation materials

Wireless/DSL internet

Conference room 2**Capacity**

30 persons



48 persons



90 persons

DimensionsFloor space: 98 m²

Length: 14 m

Width: 7 m

Height: 5 m

Equipment

Projector

PA system

Speaker's table

Pin board

Flip chart

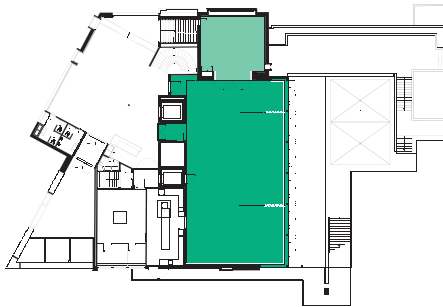
Presentation materials

Wireless/DSL internet

RESTAURANT



Ground floor



Equipment

Projector
PA system
Wireless/DSL internet
Park terrace

Capacity



180 persons



250 persons



220 persons
including Room 1



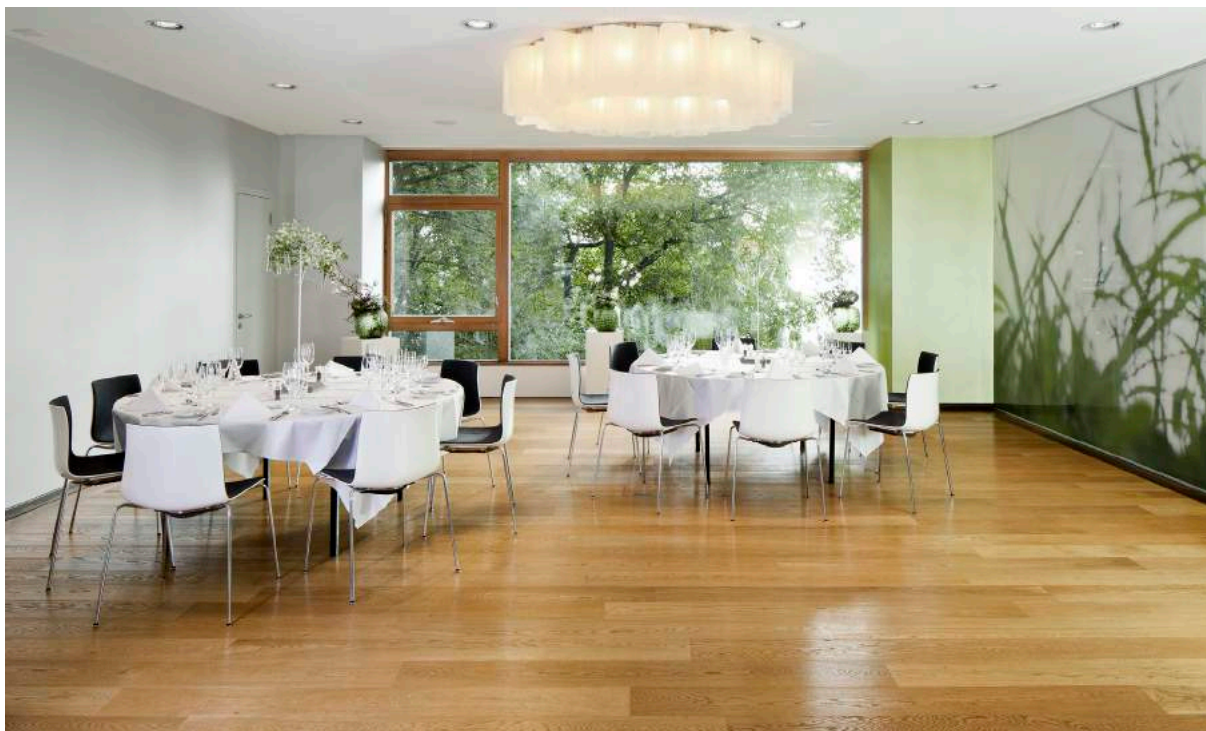
310 persons
including room 1

Dimensions

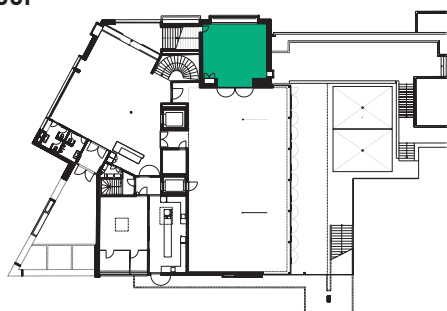
Floor space: 270 m²
Floor space (including Room 1): 330 m²
Length: 22.5 m
Width: 12 m
Height: 3 m

Exhibitions inside the restaurant on request

ROOM 1



Ground floor



Capacity



12 persons



40 persons



50 persons

Dimensions

Floor space: 60 m²

Length: 8 m

Width: 7.5 m

Height: 3 m

Equipment

Projector

Speaker's table

Pin board

Flip chart

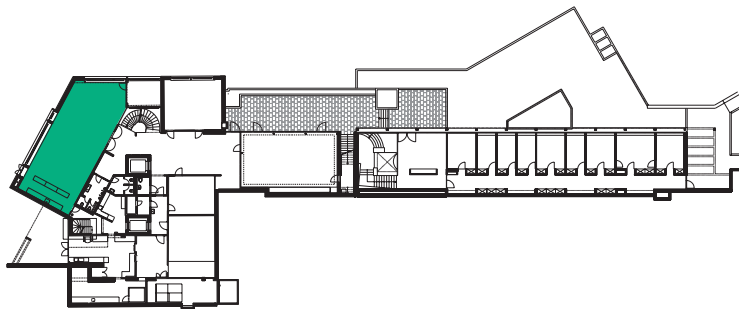
Presentation materials

Wireless/DSL internet

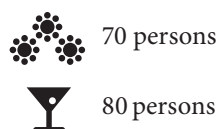
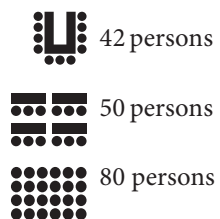
LIBRARY



1st basement



Capacity



Dimensions

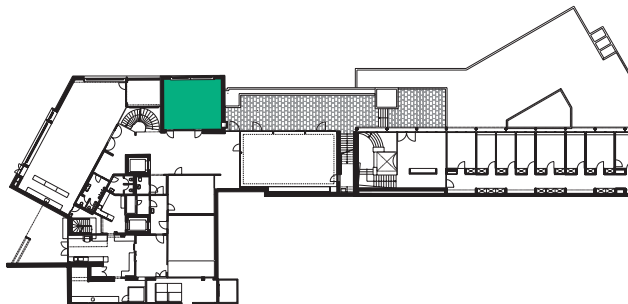
Floor space: 135 m²
 Length: 18 m
 Width: 7.5 m
 Height: 2.8 m

Equipment

Projector
 Sound system
 Speaker's table
 Pin board
 Flip chart
 Presentation materials
 Wireless/DSL internet

ROOM 2

1st basement



Capacity



14 persons



18 persons



16 persons



40 persons

Dimensions

Floor space: 49 m²

Length: 7.5 m

Width: 6.5 m

Height: 2.8 m

Equipment

Projector

Sound system

Speaker's table

Pin board

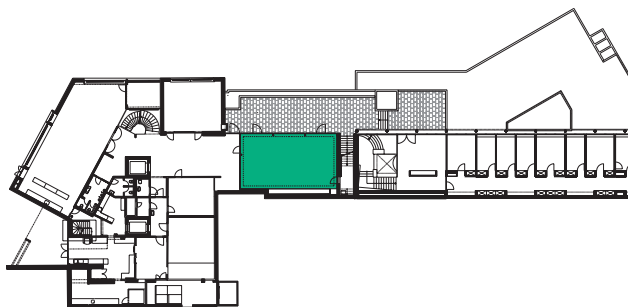
Flip chart

Presentation materials

Wireless/DSL internet

ROOM 3

1st basement



Capacity



26 persons



34 persons



60 persons

Dimensions

Floor space: 95 m²

Length: 12.5 m

Width: 7.5 m

Height: 2.8 m

Equipment

Projector

Sound system

Speaker's table

Pin board

Flip chart

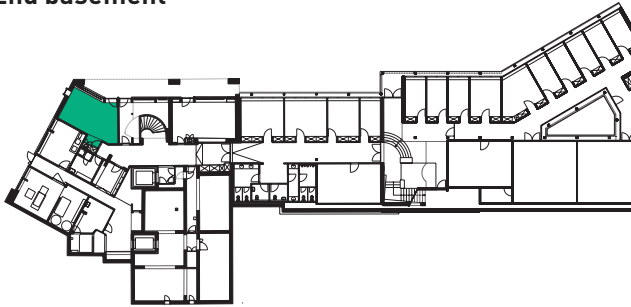
Presentation materials

Wireless/DSL internet

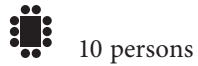
Lake terrace

ROOM 4

2nd basement



Capacity



10 persons

Dimensions

Floor space: 25 m²

Length: 5.6 m

Width: 4.5 m

Height: 2.5 m

Equipment

Projector

Pin board

Flip chart

Whiteboard

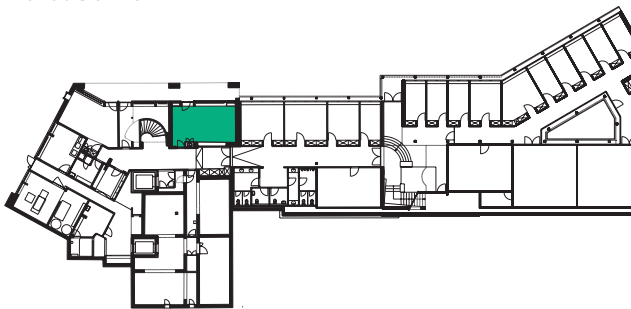
Presentation materials

Wireless/DSL internet

Terrace

ROOM 5

2nd basement



Capacity



12 persons

Dimensions

Floor space: 37 m²

Length: 7.5 m

Width: 4.9 m

Height: 2.6 m

Equipment

Projector

Pin board

Flip chart

Whiteboard

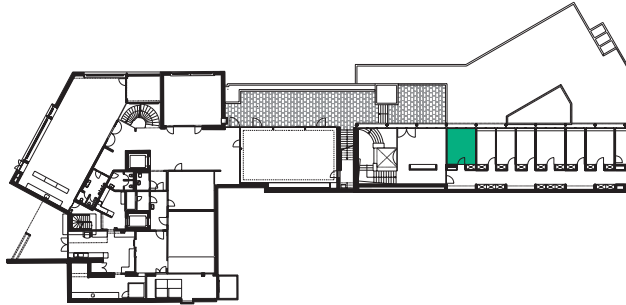
Presentation materials

Wireless/DSL internet

Terrace

ROOM 6

2nd basement



Capacity



8 persons



Dimensions

Floor space: 17 m²

Length: 4.4 m

Width: 3.7 m

Height: 2.6 m

Equipment

Pin board

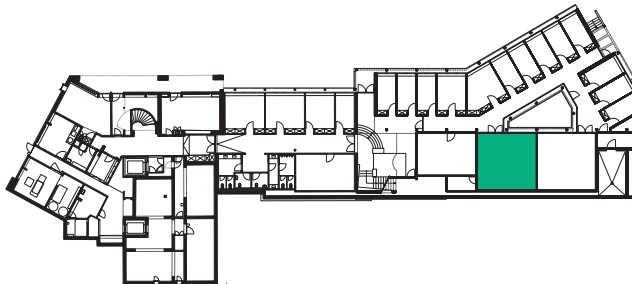
Flip chart

Presentation materials

Wireless/DSL internet

ROOM 7

2nd basement



Capacity



14 persons



18 persons



16 persons



32 persons



Dimensions

Floor space: 56 m²

Length: 7.6 m

Width: 7.4 m

Height: 2.6 m

Equipment

Projector

Speaker's table

Pin board

Flip chart

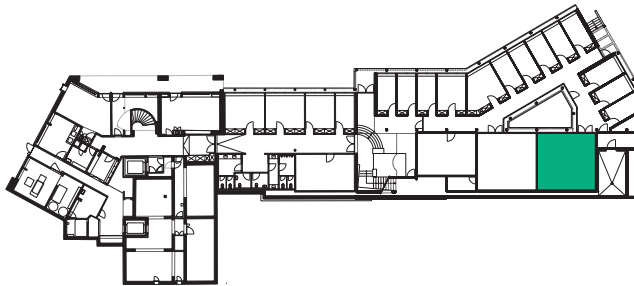
Whiteboard

Presentation materials

Wireless/DSL internet

ROOM 8

2nd basement



Capacity



14 persons



18 persons



16 persons



32 persons

Dimensions

Floor space: 56 m²

Length: 7.6 m

Width: 7.4 m

Height: 2.6 m

Equipment

Projector

Speaker's table

Pin board

Flip chart

Whiteboard

Presentation materials

Wireless/DSL internet



Room 7 + 8



Multimedia room



Park terrace



Foyer A



Foyer B



Foyer C

GDI Gottlieb Duttweiler Institute

Langhaldenstrasse 21

CH-8803 Rüschlikon/Zurich

Phone +41 44 724 61 11

info@gdi.ch

www.gdi.ch

Written enquiries, bookings or viewing appointments: meet@gdi.ch, gdi.ch/location