

# Event location

## Hamburg Cruise Center Baakenhöft



Photo © Stefan Groenveld

Rental information

# Event location in HafenCity with a view of the Elbe

Hamburg Cruise Center Baakenhöft



Photo © Stefan Groenveld

Celebrate and hold meetings with a direct view of the Elbe and the port – this is what Cruise Center Baakenhöft offers. Centrally located in the heart of HafenCity, currently Europe's biggest inner-city urban development project, the terminal building's approx. 800 m<sup>2</sup> reception hall lends itself to a wide variety of events such as conferences, corporate functions, trade fairs, galas and cultural events (capacity up to 700 people).

Here, right by the Elbe and in the heart of Hamburg, many of the world's leading cruise ships tie up every year. When

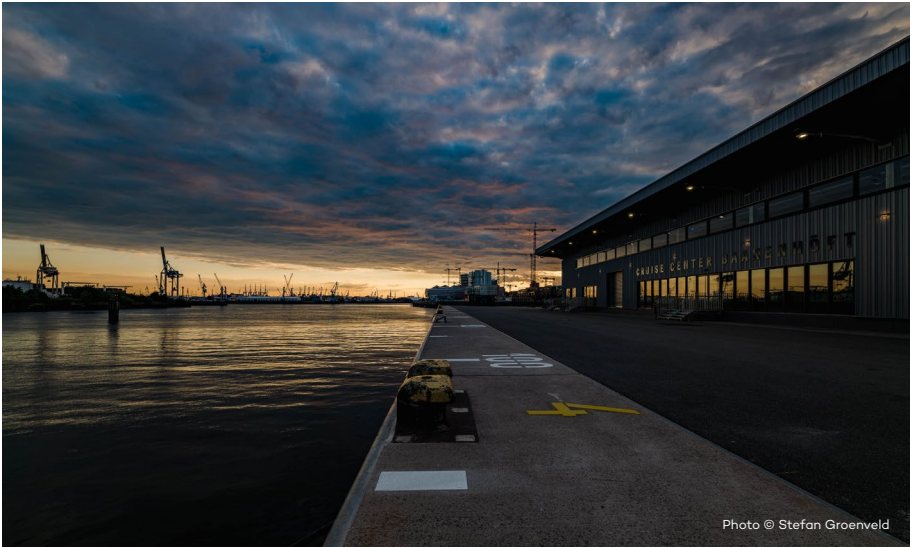
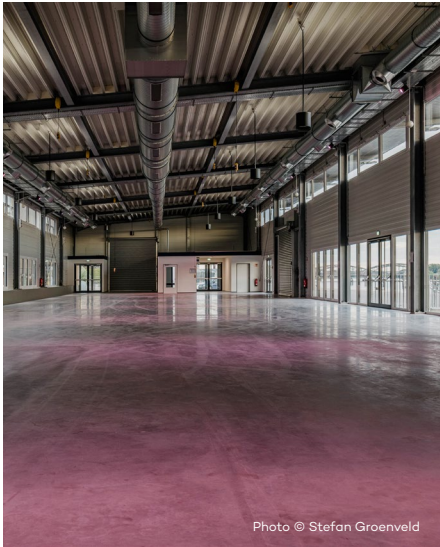
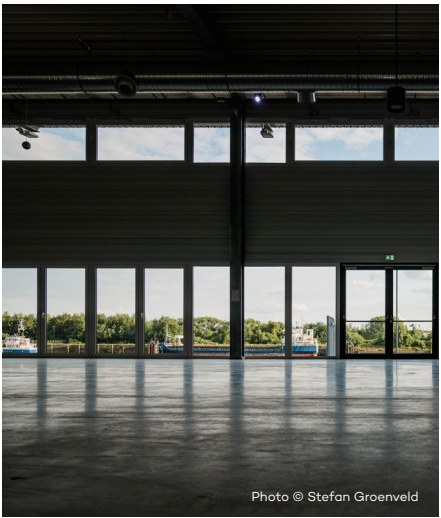
not in use for cruise ship operations, the pillar-free reception hall offers an unusual setting for special events and celebrations. The port and the Elbe can be experienced both through the large waterside panoramic windows and from the spacious outside areas on the quayside.

Its central setting means that Hamburg Cruise Center Baakenhöft is a maritime focal point, one that can be easily reached in a few minutes from the city center and the main station. There is a direct subway link via the U4 line (HafenCity Universität station).

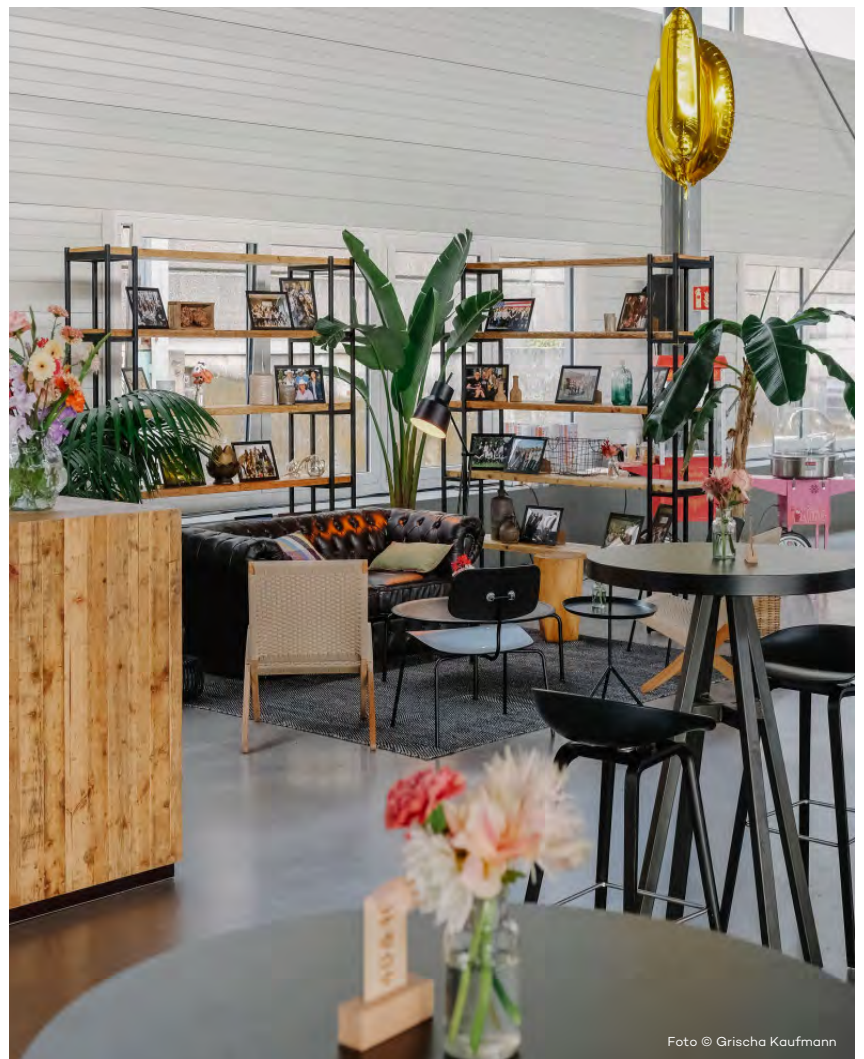
Ample parking directly at the building mean it is easily reached by car.

Events can be arranged very flexibly and individually, since neither the technology nor the catering is tied to a service provider.









# Fact about Hamburg Cruise Center Baakenhöft

## Address

Hamburg Cruise Center Baakenhöft  
Baakenhöft 1  
20457 Hamburg

## Location

City center / main station: approx. 2.3 km  
Hamburg Airport: approx. 15 km / 30 minutes  
A255 expressway: approx. 2.2 km  
U4 subway: station "HafenCity Universität"  
(approx. 500 m on foot)  
Bus route 111: bus stop "Baakenhöft"  
(approx. 250 m on foot)

## Dimensions

800 m<sup>2</sup> usable event space  
50 m<sup>2</sup> sanitary facilities incl. disabled access toilet  
13.5 m<sup>2</sup> usable ancillary rooms (e.g. back office)  
approx. 4,000 m<sup>2</sup> outdoor area (waterside)  
approx. 3,000 m<sup>2</sup> outdoor area (shoreside)

## Capacity | authorization

Approval as place of assembly max. 700 persons

## Type of event

Conferences, corporate events, trade fairs, galas, cultural events, etc.

## Catering

Not tied to a service provider

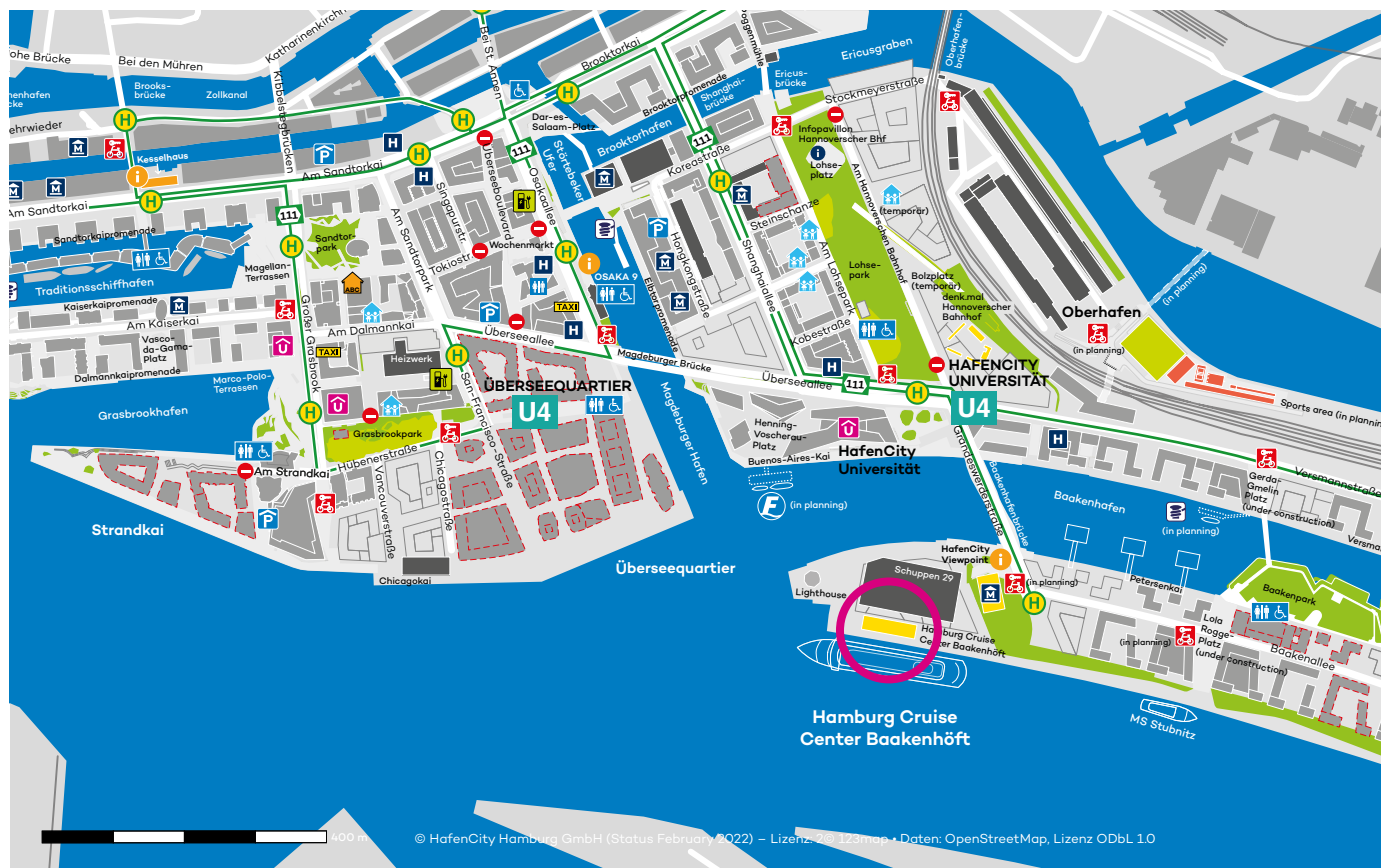
## Technology

Not tied to a service provider

## Cleaning

Tied to a service provider

## Site plan



Completed building	Existing building	Playgrounds and sports areas	Stadtrab   rental point
Planned building	Street / building under construction	HafenCity InfoCenter	eMobility charging point
Temporary building	Parks and green areas	Hotel   guesthouse	Ferry route
			Launch jetty



