

# **WATERGATE CLUB BERLIN**

OBERBAUM GASTSTÄTTENBETRIEBS GMBH  
FALCKENSTEINSTR.49 • 10997 BERLIN  
INFO@WATER-GATE.DE • WWW.WATER-GATE.DE  
@watergate.club.official







# WHO WE ARE

Since its opening in October 2002, the Watergate in Berlin-Kreuzberg has been one of the world's most important addresses for electronic music and enjoys an excellent reputation among audiences and musicians alike.

The club has a top notch standing among audiences and musicians regionally, nationally and internationally.

In the annual charts of the most important print and online magazines, it has been consistently voted into the top positions for years, which is due to its location, architecture, interior and spectacular lighting design, as well as its diverse music programme, interior and spectacular lighting design. The dominant feature of the upper "Mainfloor" is the world's first large-scale, animated LED light installation in the club field. The installation can be controlled live and can create the right effects and moods for every occasion and moment.

The lower "Waterfloor" is glazed on one side and offers a spectacular view of the Spree, Oberbaumbrücke and the urban skyline of modern companies that have gathered in the hip surroundings of Friedrichshain-Kreuzberg. The sunrises here are legendary. Via a staircase, the Waterfloor is directly connected to a terrace that seems to float above the surface of the Spree and provides an exclusive setting for many events: Music performances, multimedia shows, presentations, receptions or private celebrations.





# FLOORS



The Watergate is divided into two floors of almost equal size.  
Approximately 400 people can celebrate on the upper floor (Mainfloor).



The lower floor (Waterfloor) with a 30m long, glazed front directly on the Spree offers space for approx. 400 people.





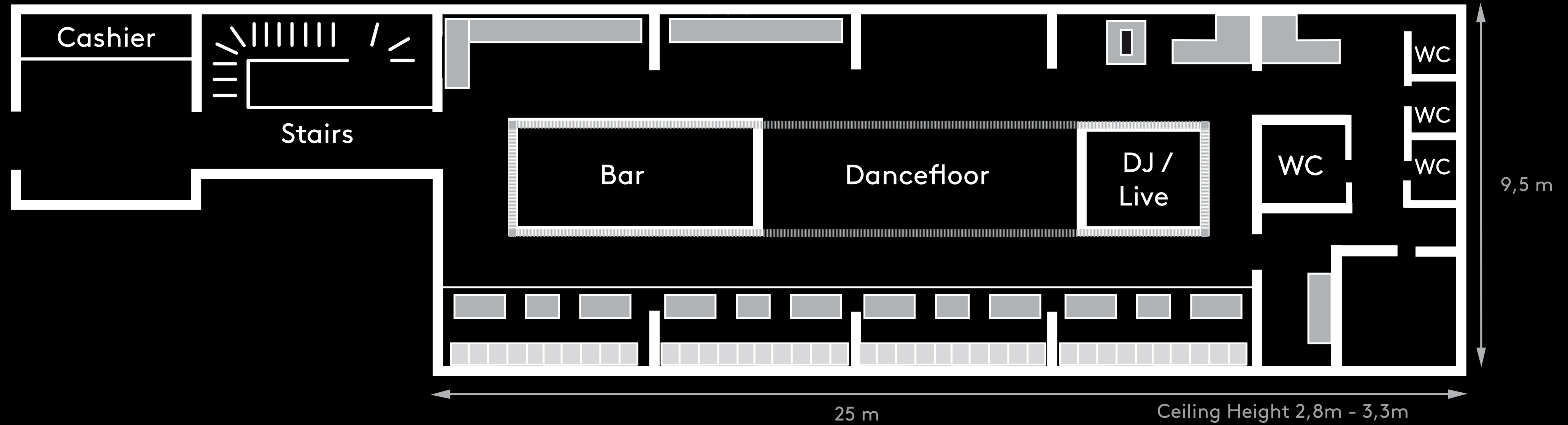
## MAINFLOOR

- Max. 400 people capacity
- A well-stocked bar
- Seating for approx. 60 people
- DJ system for high demands
- LED lighting system
- High-quality ventilation
- 16-32 amp CEE available
- Backstage for artists
- Toilets





# MAINFLOOR



# MAINFLOOR

## MAINFLOOR

### AMPING

- 1X XTA DP448 CONTROLLER
- 1X OSC PLX 24SS2 (TOPS HI)
- 1X CREST AUDIO CC4000 (TOPS MID)
- 2X D&B D12 ( SUBS)
- 1X OSC AUDIO RMX 4050HD (ZONE)

### SPEAKERS

- 4X CODA AUDIO R35 (TOPS)
- 8X D&B Q-SUBS
- 2X MARTIN AUDIO LE1500 (ZONE)

## DJ BOOTH

### AMPING

- 1x D+B D80 (TOPS)
- 1x D+B D20 (SUB)

### SPEAKERS

- 2x D+B M2 MONITORS
- 2x D+B 12S (SUB)

## LIVE ACT BOOTH

### AMPING

- 1X D&B D80 (TOPS)
- 1X D&B D20 (SUB)

### SPEAKERS

- 2X D&B M2 (TOPS)
- 2X D&B 12S (SUB)

### LIGHT

- 15 x 110 LED – RGB CEILING
- INTEL CORE I5 PC
- NOVATION LAUNCH CONTROL XL





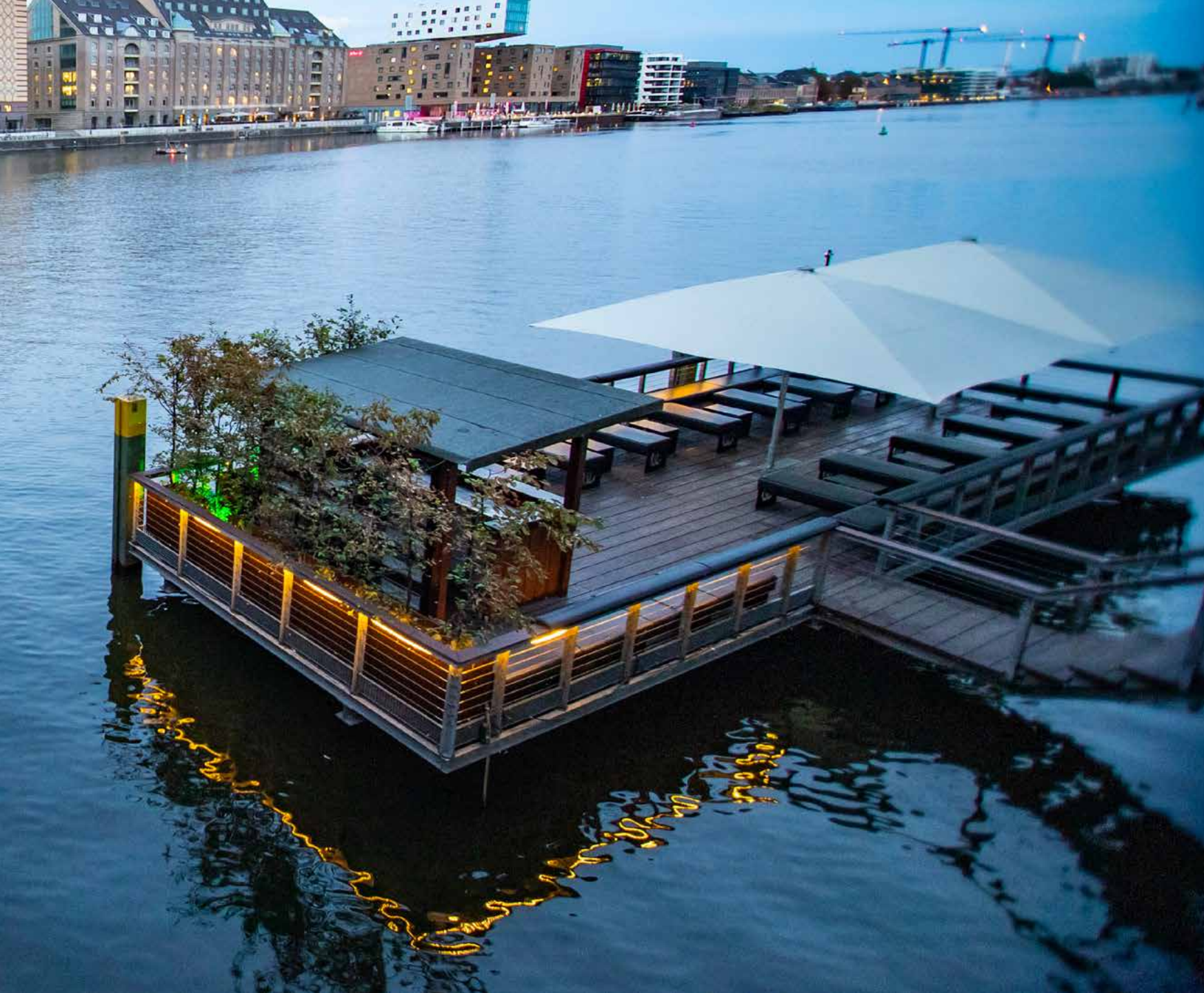


## **WATERFLOOR**

- Max. 400 person capacity
- Well-stocked bar with trained staff available
- Seating for approx. 80 people
- DJ system with good PA and small dance floor
- LED lighting system
- Ventilation available (no air conditioning)
- Toilets
- Windows can be opened
- Exit to terrace or courtyard







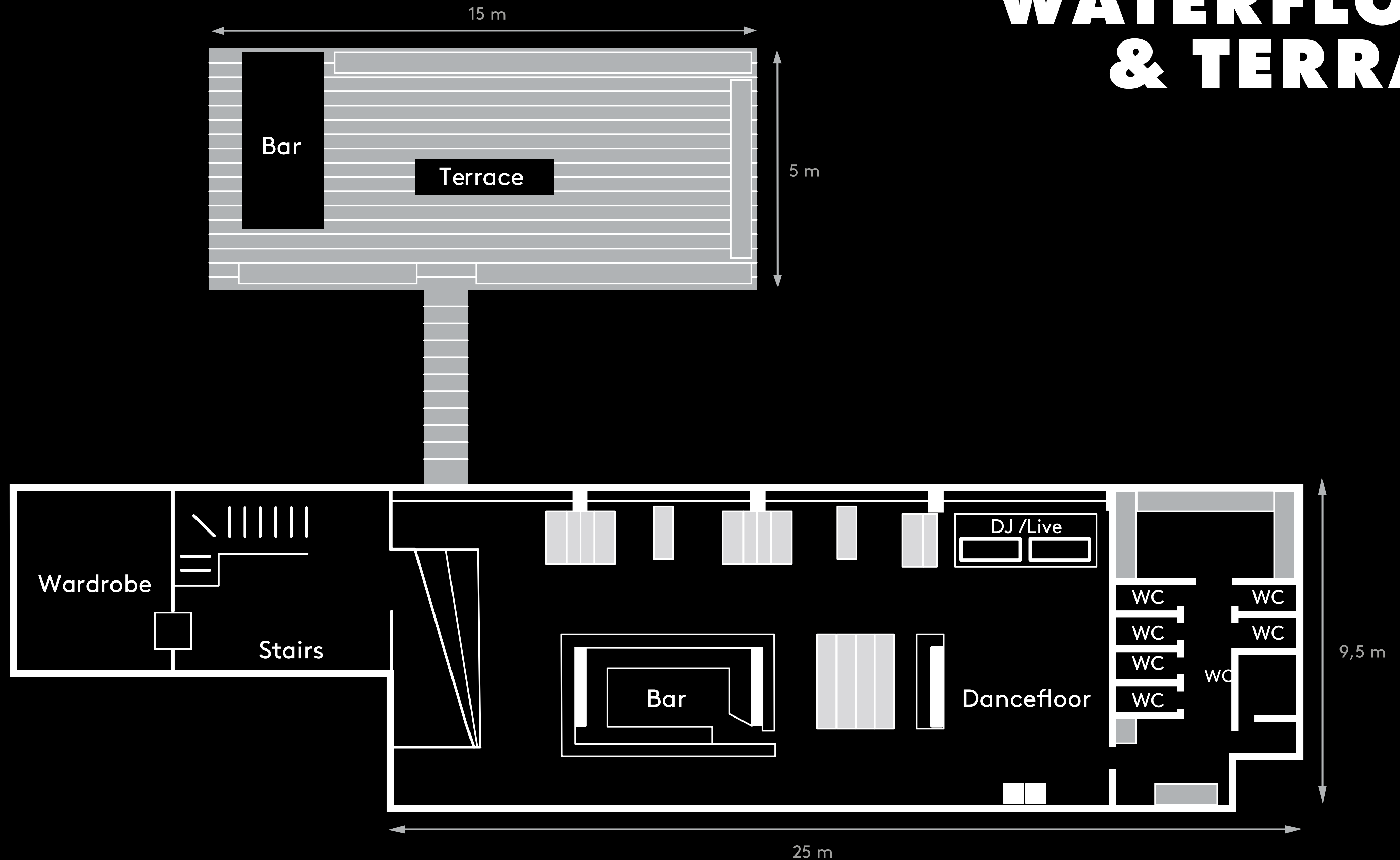
## TERRACE

- 150 people capacity
- A small bar
- Seating for approx. 80 people
- 2 huge sunshades





# WATERFLOOR & TERRACE





# WATERFLOOR

## AMPING

- 1X XTA DP 548 CONTROLLER (ZONEN)
- 1X CREST AUDIO CC4000 (ZONE1)
- 1X OSC RMX 850 (ZONE2)
- 1X D&B D80 (TOPS+SUBS DANCEFLOOR)

## SPEAKERS

- 4X D&B Q10 (TOPS)
- 4X D&B Q-SUBS
- 2X CODA AUDIO K12 (ZONE1)
- 2X TURBOSOUND (ZONE2)

## DJ BOOTH

### AMPING

- 1X DBX DRIVE RACK PA CONTROLLER
- 1X OSC AUDIO PLX 3402 (TOPS)
- 1X CREST AUDIO CC4000 (SUBS)

### SPEAKERS

- 2X MARTIN AUDIO BLACKLINE F12 (TOPS)
- 2X EV ZX1 (SUBS)

### LIGHT

- CUSTOM MADE LED – RGB CEILING
- INTEL CORE I5 PC
- IPAD CONTROLLABLE





# EQUIPMENT

## DJ EQUIPMENT

- 7X TECHNICS SL 1210 MK2
- 8X PIONEER CDJ 3000
- 6X PIONEER CDJ 2000 NXS2
- 2X PIONEER RMX 1000
- 2X SHURE SM 58
- 1X SHURE SM 57 BETA

## DJ MIXERS

- 2X PIONEER DJM 900 NXS2
- 2X ALLEN&HEATH XONE 96
- 1X ALLEN&HEATH ZONE 92
- 1X PLAY DIFFERENT MODEL1

## LIVE MIXERS

- 2X MACKIE 1604
- 1X MIDAS VENICE 240

## STAGE EQUIPMENT

- 1X KEY-STAND
- 3X MIC-STAND (BOOM)
- 2X MIC-STAND (STRAIGHT)

- 2X DI-BOX ACTIVE
- 3X DI-BOX PASSIVE

- 1X DBX 1066 COMPRESSOR
- 2X DBX 1231 GRAPHIC EQ
- 1X DBX 2231 EQ/ LIMITER

- CABLES DIV. - MULTICORE
- POWER-CABLES
- 2X 8F STAGE-BOX

## ADDITIONAL STAGE OPTIONS

- STAGE ELEMENTS 100 X 200 CM
- STAGE ELEMENTS 50 X 200 CM
- STAGE RISERS ARE 30 CM OR 90 CM

MAXIMUM STAGE SIZE: 5M X 2,5 M

## POWER

- 1X 32A CEE (SOUND)
- 1X 32A CEE (LIGHT)
- 1X 16A CEE (LIGHT)



# REFERENCES

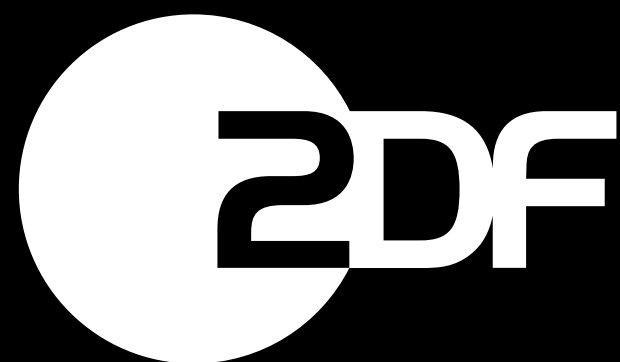
NETFLIX

BMW  
GROUP

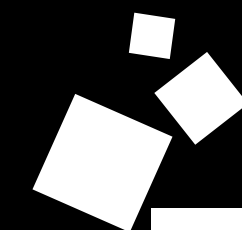


+Babbel

kulturradio<sup>rbb</sup>



zalando



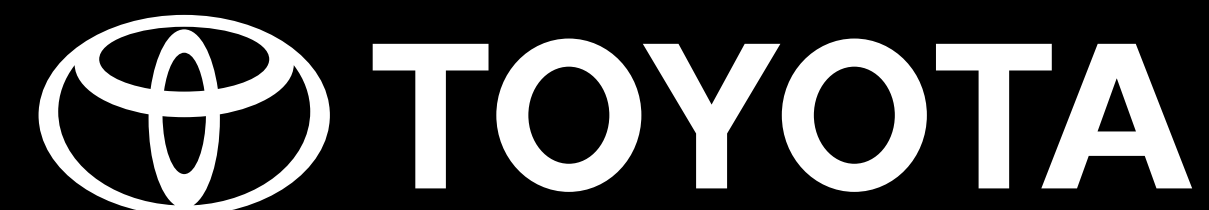
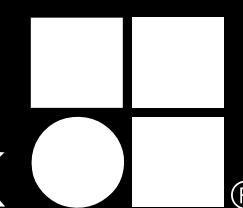
Messe  
Frankfurt



DIAGEO



d&b  
audiotechnik



Lufthansa

EXTRACT FROM RENTAL-REFERENCE LIST