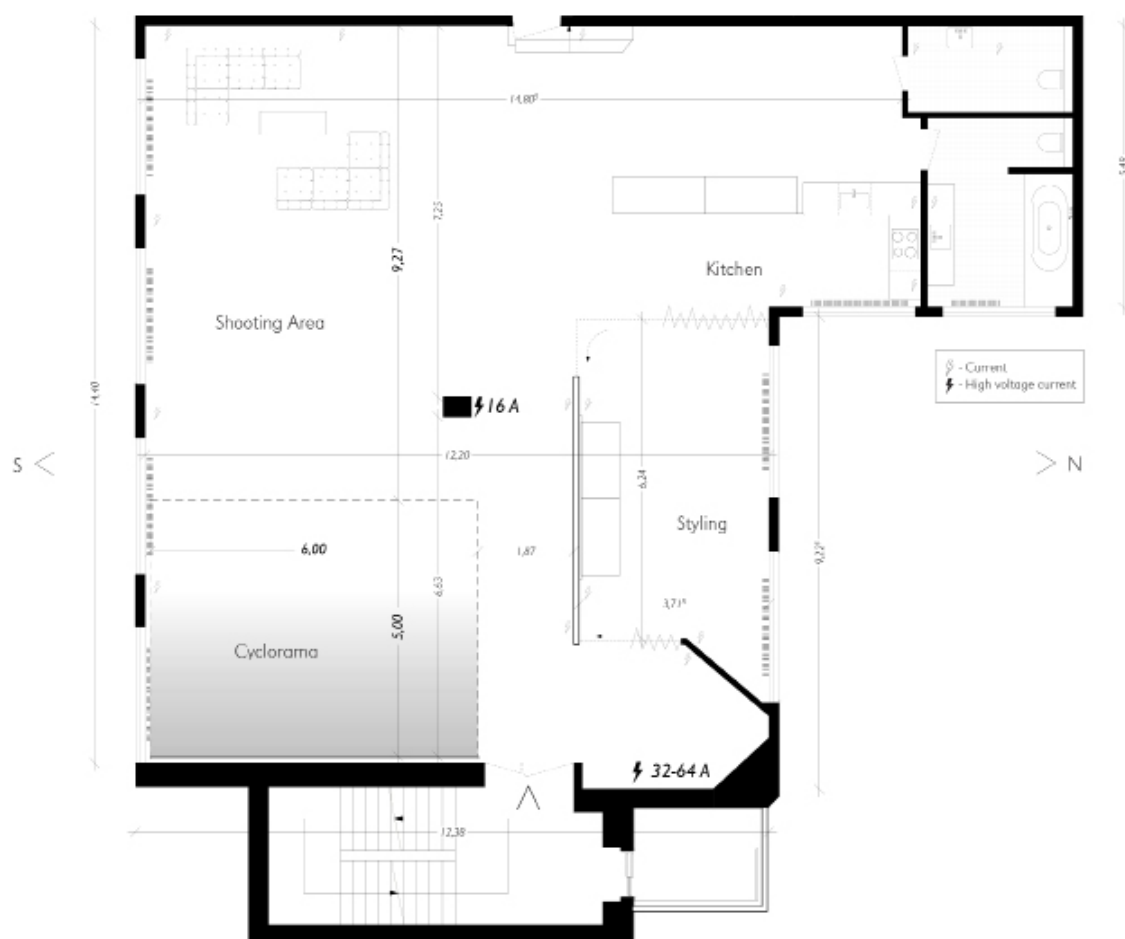


STUDIO 3F.



Studio Chérie

CONTACT
[+49 \(0\)30 3395 44 31](tel:+493033954431)
info@studiocherie.net
 Hobrechtstr. 65
 12047 Berlin

For urgent call:
 Renan - Director
[+49 \(0\)178 7808 676](tel:+49301787808676)

PRICE	PHOTO	VIDEO
Day rate (9am to 7pm)	700€	800€
Half day (5h)	400€	500€
Overtime	105€	120€

20% discount on weekdays (50% on weekends) on studios and lighting equipment for editorial and test shoots as well as art and charity projects.

EXTRA SERVICES

Studio as motif: +40%
 Holiday extra charge: +50%
 Intermediate cleaning: 45€
 Final cleaning: 85€
 Overtime from 21h: +50%
 Painting (coving, floor, walls): 5€/sq.m.
 Background paper: 10 €/m
 Tungsten and HMI luminaires: 0.40 €/kWh
 A service fee is charged for equipment storage and supplies according to expenditure.

EQUIPMENT

Our in-house rental offers you "à la carte" lighting equipment from Profoto, Arri, Avenger, Manfrotto, and many more. What we do not have on site, we can organize for you. Just send us your list and we will make you an offer.

TECHNICAL DETAILS

3rd floor
 Size: 210sqm
 Three-Phase: 16A & 32A
 Ceiling height: 3.6m
 Daylight: southern & northern
 Cyclorama: 6 x 4 x 3.6m
 Elevator: 1.1 x 2.1 x 2.15m
 Elevator door: 0.9 x 2.1m

MAKE-UP & STYLING

2x Steamer
 3 x Clothes rails incl. 60 hangers
 Fan heater

LOOK

Walls: white painted bricks and smooth, white plaster
 Floor: Concrete (Wooden parquet on demand)
 Walls and props list on request

SERVICES

Highspeed WiFi Down 1000/ Up 50 Mbit/s
 Music system Bluetooth
 Air filter Philips 4000i
 Open kitchen with stove/oven and dishwasher
 Bathroom with bathtub

TERMS & CONDITIONS

CANCELLATION FEES

During the corona pandemic, the cancellation conditions remain unchanged, even if the shoots are postponed due to a corona case. The tenant is responsible for finding a replacement for the person on his team who cannot work on the production day. If the government and the Chamber of Commerce and Industry take restrictive measures and no longer allow photo shoots or shoots, there will be no cancellation fees.

Cancellation fee is based on the agreed rent. It depends from cancellation time before the beginning of rent:

25% before 11 days, 50% from 11 days and before 6 days, 70% from 6 and before 3 days before and 100% afterward.

DELIVERY / PARKING VEHICLES

The access to the yard and thus the parking in the yard is excluded for insurance reasons.

For loading and unloading vehicles can stop in front of the gate and use Studio Chérie's transport carts.

Parking is available in the surrounding area or in the car park Karstadt - Hermannplatz.

For Equipment transporters & catering trucks, an unloading zone permit can be registered by customers in prior to the shooting to the [Berlin Services & permits dept.](#)

TERMS OF PAYMENT

The agreed rent is payable immediately after invoicing by the landlord and without deductions. For regular business customers based in Germany, 70% of the rent is due on booking confirmation. New customers based in Germany and customers with headquarters outside Germany is a 100% deposit plus a copy of the ID or business registration required. The rental price includes all ancillary costs in the sense of the operating cost regulation (energy, heating, water). For the organization and storage of equipment and supplies, a service fee will be charged depending on the effort. The landlord is entitled to charge the rent or parts thereof by separate agreement in advance. Failure to comply with payment dates entitles the landlord to immediately terminate the lease.

All prices are exclusive of the applicable value added tax. Offsetting against earlier or future claims is excluded, unless they are undisputed or legally binding. Irrespective of this, the contractually agreed rental price must be paid in full, irrespective of whether the premises or equipment were actually used to the agreed extent by the hirer. For bookings from abroad, the total amount must be paid in advance via bank transfer, Paypal or at the beginning of the rental period in cash.

Equipment, catering, drinks and other services, such as set building, painting or assistance are not included in the studio rent and will be charged separately.

The use of continuous light (Tungstene and HMI) will be charged additionally with 0,40 € per kw / h. As far as the landlord on behalf of the tenant contracts with third parties, such. for equipment, catering or the like, these costs are in any case by the tenant at the end of the lease in cash or cash in advance in the landlord to settle in detail.

RENT PERIOD

The rent indicated in the price list is a daily rent and includes a maximum rental period from 9am to 7pm. The agreed rental period is to be observed. If the tenant is in arrears with the eviction, then he will be charged an overtime per hour in excess of the basic rent. The premises are completely vacated and left in their original condition at the end of the rental period. Exceptions require the written permission of the landlord.

Each started hour is counted as a full hour.

The studio opens on weekends at 9am.

Due to internal organization, all previous arrivals or later departures as well as deliveries - pickups must be discussed in advance with the studio team.

The noise caused by the tenant due to possible sources of noise (strobos, music, setup / dismantling, etc.) must be maintained at a moderate level.

For damage and loss of the rental object and the building, the associated facilities and equipment and property damage and personal injury, including any consequential damage, the lessee is liable for compensation, as far as this damage caused by him or the persons belonging to its production or by third parties culpably, who are in the rented rooms with his knowledge and with his acquiescence or at his instigation.

Please note our terms and conditions at www.studiocherie.net > [terms and conditions](#).